

Der Trick mit der Tapete

Die Resonanzkästen der Klingenden Stäbe von Sonor haben unterschiedlich große Grundflächen. Auf den folgenden Seiten sind die Grundflächen im Maßstab 1:1 abgebildet.

Wir basteln eine Aufbauhilfe für das Lied „Mach Musik!“:



1. Drucke die Seiten 2 bis 6 aus (am besten auf einem Laserdrucker).



2. Schneide die Grundflächen aus.

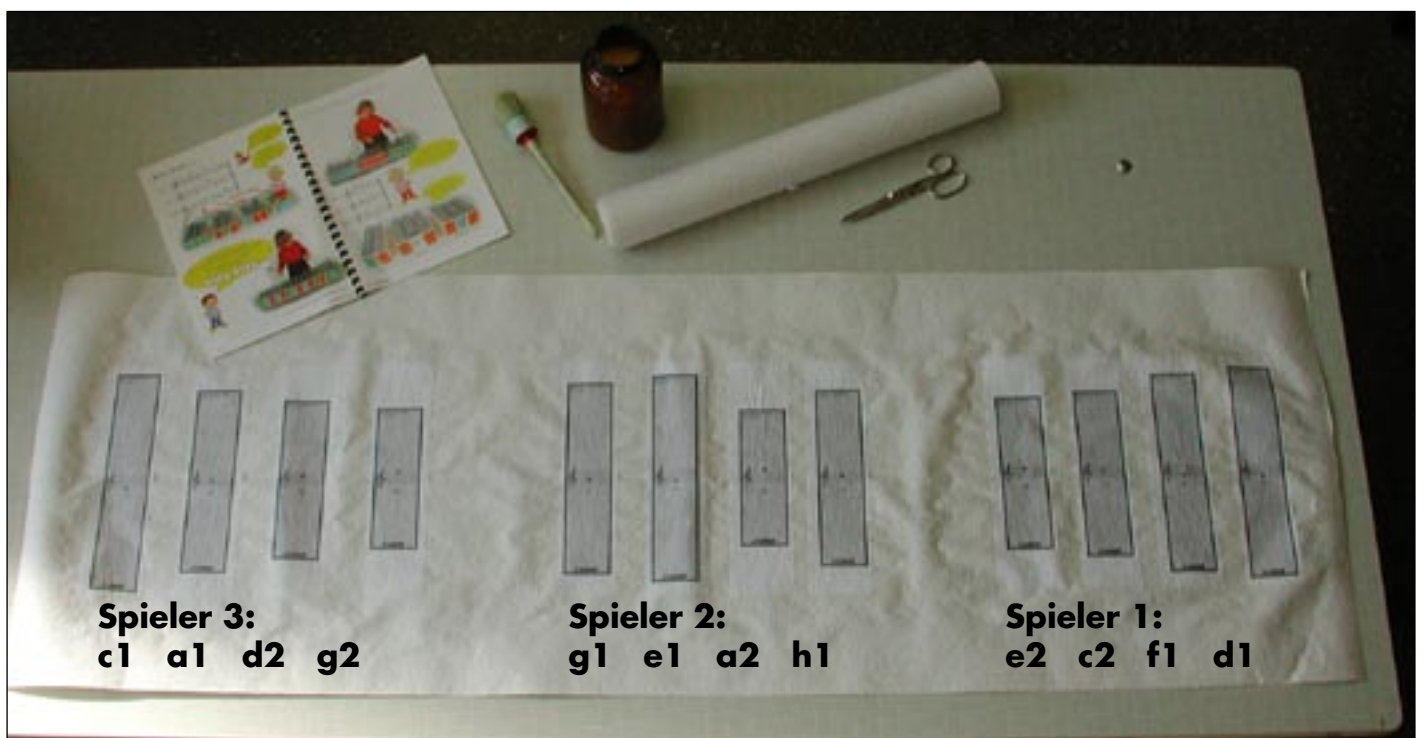
3. Klebe die Grundflächen auf eine Tapete. Wir haben dafür Tapetenkleister genommen. Wie und in welcher Reihenfolge die Grundflächen aufgeklebt werden müssen, siehst du hier.

C Am Dm G

Spieler 1

Spieler 2

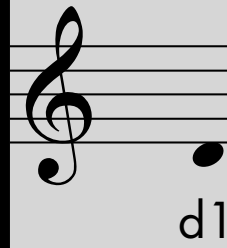
Spieler 3



Klingender Stab KS 40
Ton c' (c1)



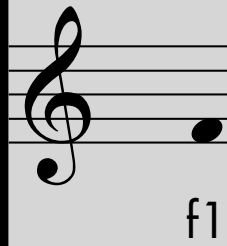
Klingender Stab KS 40
Ton d' (d1)



Klingender Stab KS 40
Ton e' (e1)



Klingender Stab KS 40
Ton f' (f1)



 **SONOR**[®]

Klingender Stab KS 40
Ton g' (g1)



 **SONOR**[®]

Klingender Stab KS 40
Ton a' (a1)



 **SONOR**[®]

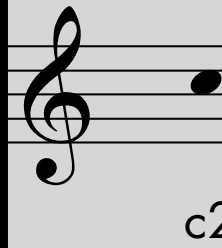
Klingender Stab KS 40
Ton h' (c1)



h1

 **SONOR**[®]

Klingender Stab KS 40
Ton c'' (c2)



c2

 **SONOR**[®]

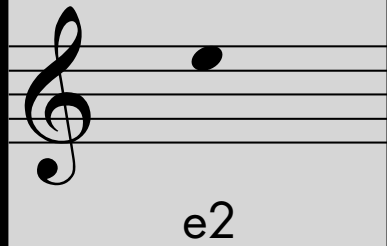
Klingender Stab KS 40
Ton d'' (d2)



d2

 **SONOR**[®]

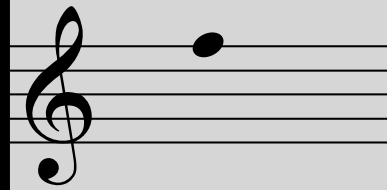
Klingender Stab KS 40
Ton e'' (e2)



e2

 **SONOR**[®]

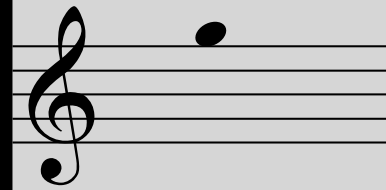
Klingender Stab KS 40
Ton f'' (f2)



f2

 **SONOR**[®]

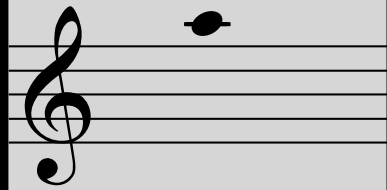
Klingender Stab KS 40
Ton g'' (g2)



g2

 **SONOR**[®]

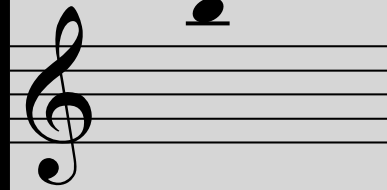
Klingender Stab KS 40
Ton a'' (a2)



a2

 **SONOR**[®]

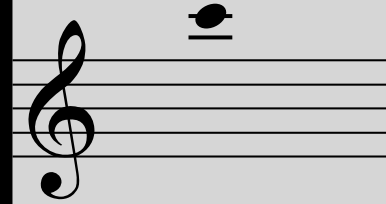
Klingender Stab KS 40
Ton h'' (h2)



h2

 **SONOR**[®]

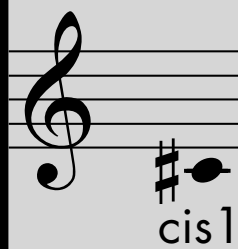
Klingender Stab KS 40
Ton c''' (c3)



c3

 **SONOR**[®]

Klingender Stab KS 40
Ton cis' (cis1)



Klingender Stab KS 40
Ton des' (des1)



Klingender Stab KS 40
Ton dis' (dis1)



Klingender Stab KS 40
Ton es' (es1)



Klingender Stab KS 40
Ton fis' (fis1)



Klingender Stab KS 40
Ton ges' (ges1)



Klingender Stab KS 40
Ton gis' (gis1)



gis1

Klingender Stab KS 40
Ton as' (as1)



as1

Klingender Stab KS 40
Ton ais' (ais1)



ais1

 **SONOR**[®]

Klingender Stab KS 40
Ton b' (b1)



b1

 **SONOR**[®]

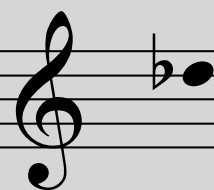
Klingender Stab KS 40
Ton cis'' (cis2)



cis2

 **SONOR**[®]

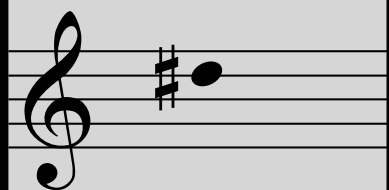
Klingender Stab KS 40
Ton des'' (des2)



des2

 **SONOR**[®]

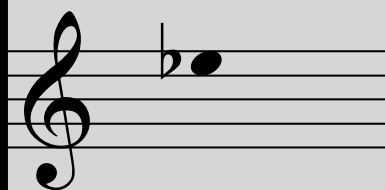
Klingender Stab KS 40
Ton dis'' (dis2)



dis2

 **SONOR**[®]

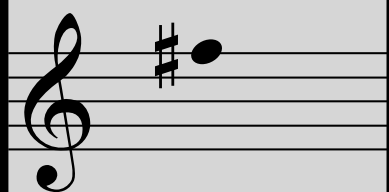
Klingender Stab KS 40
Ton es'' (es2)



es2

 **SONOR**[®]

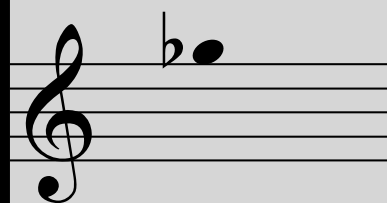
Klingender Stab KS 40
Ton fis'' (fis2)



fis2

 **SONOR**[®]

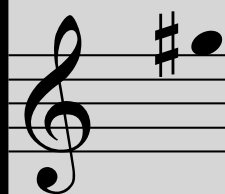
Klingender Stab KS 40
Ton ges'' (ges2)



ges2

 **SONOR**[®]

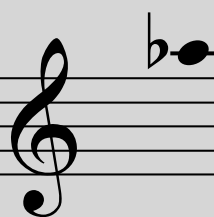
Klingender Stab KS 40
Ton gis'' (gis2)



gis2

 **SONOR**[®]

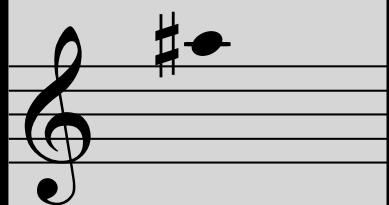
Klingender Stab KS 40
Ton as'' (as2)



as2

 **SONOR**[®]

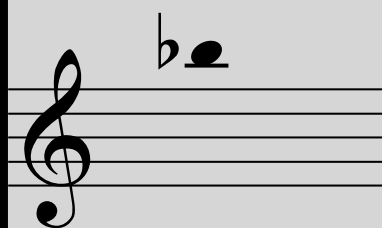
Klingender Stab KS 40
Ton ais'' (ais2)



ais2

 **SONOR**[®]

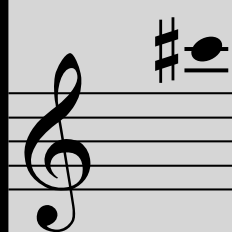
Klingender Stab KS 40
Ton b'' (b2)



b2

 **SONOR**[®]

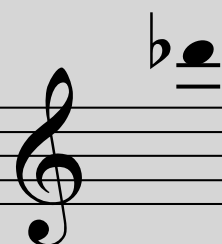
Klingender Stab KS 40
Ton cis''' (cis3)



cis3

 **SONOR**[®]

Klingender Stab KS 40
Ton des''' (des3)



des3

 **SONOR**[®]